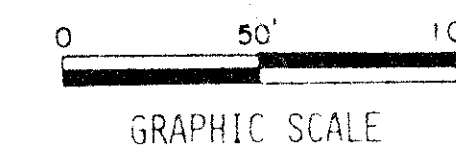
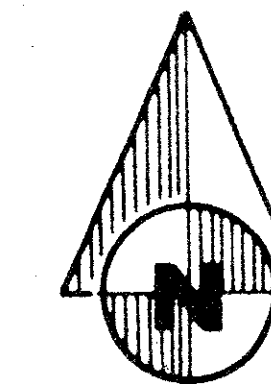


A PART OF A P.U.D.  
**MIRROR LAKES**  
**PLAT NO. 1**

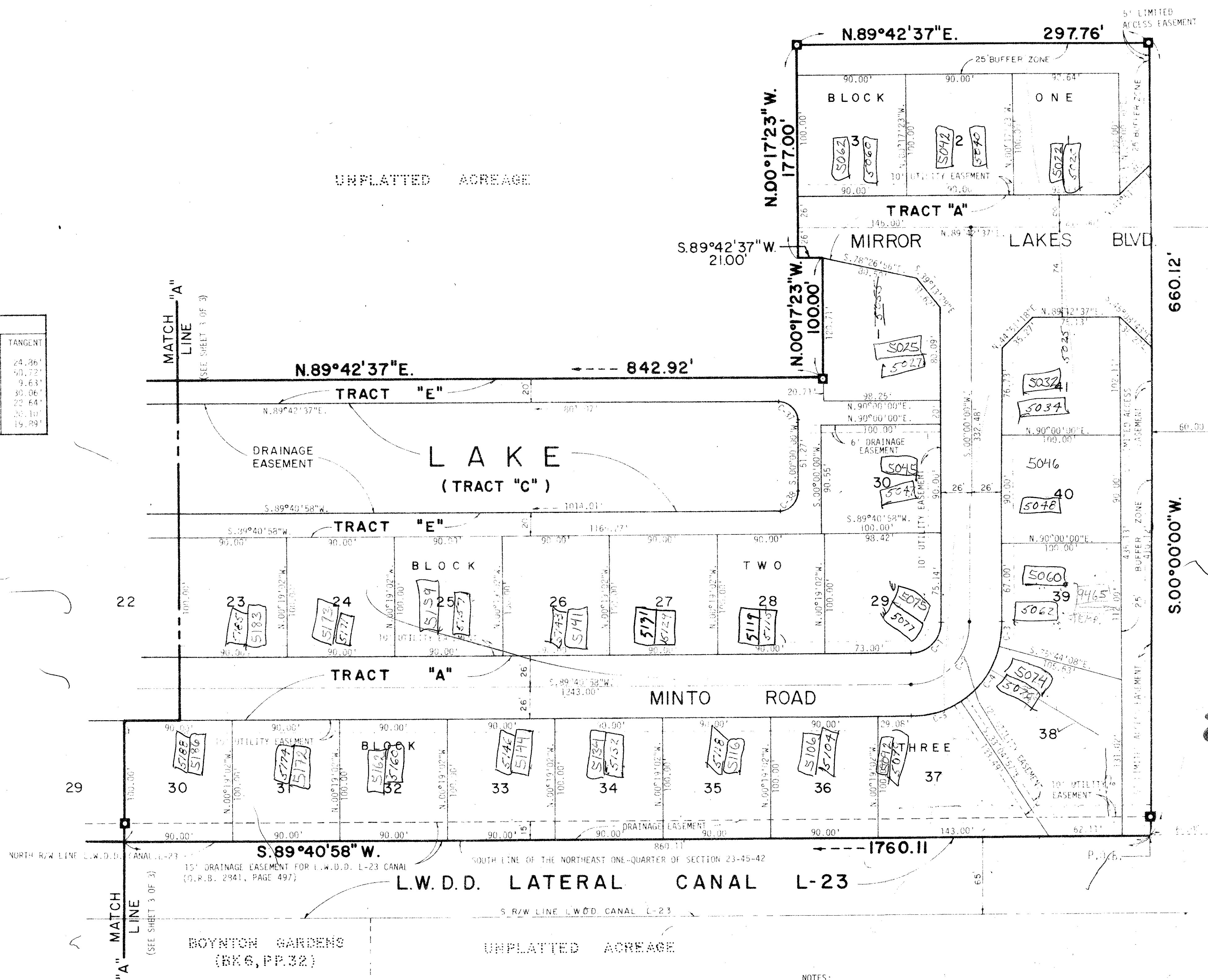
LYING IN THE SOUTH ONE-HALF OF THE NORTHEAST ONE-QUARTER OF SECTION 23, TOWNSHIP 45 SOUTH, RANGE 42 EAST, PALM BEACH COUNTY, FLORIDA, AND BEING A REPLAT OF A PORTION OF PREVIOUSLY PLATTED LOTS 25 THROUGH 28 AND 35 THROUGH 38, INCLUSIVE, BOYNTON GARDENS, (AS RECORDED IN PLAT BOOK 6, PAGE 32 AND VACATED IN OFFICIAL RECORD BOOK 1700, PAGE 558).

SHEET 2 OF 3



STATE OF FLORIDA  
 COUNTY OF PALM BEACH  
 THIS PLAT WAS FILED FOR  
 RECORD AT \_\_\_\_\_ M.  
 THIS \_\_\_\_\_ DAY OF \_\_\_\_\_  
 A.D., 1978 AND DULY RE-  
 CORDED IN PLAT BOOK  
 ON PAGES \_\_\_\_\_ AND  
 JOHN B. BUNKLE, CLERK  
 CIRCUIT COURT  
 BY: \_\_\_\_\_

CURVE DATA					
C. NO.	CHORD ANG.	RADIUS	ARC	CHORD	TANGENT
1	89°40'58"	151.00'	39.11'	35.76'	24.86'
2	89°40'58"	151.00'	39.11'	35.76'	24.86'
3	89°40'58"	151.00'	39.11'	35.76'	24.86'
4	89°40'58"	151.00'	39.11'	35.76'	24.86'
5	89°40'58"	151.00'	39.11'	35.76'	24.86'
6	89°40'58"	151.00'	39.11'	35.76'	24.86'
7	89°40'58"	151.00'	39.11'	35.76'	24.86'
8	89°40'58"	151.00'	39.11'	35.76'	24.86'
9	89°40'58"	151.00'	39.11'	35.76'	24.86'
10	89°40'58"	151.00'	39.11'	35.76'	24.86'



**35**

23/45/42

1000-131

CONRAD W. SCHAEFER CONSULTING ENGINEERS INC.  
 PALM BEACH COUNTY, FLORIDA

**MIRROR LAKES**  
**PLAT NO. 1**

**35/166**

DR 78-024

3-6-78 1"=50'

2 3

**MIRROR LAKES #1**

- NOTES:
- INDICATES A 4" x 4" PERMANENT REFERENCE MONUMENT, F.S. 1041, 1042.
  - INDICATES A PERMANENT CONTROL POINT, F.S. 1041, 1042.
  - THERE SHALL BE NO BUILDINGS OR ANY KIND OF CONSTRUCTION OR TRAIL PLACED ON DRAINAGE EASEMENTS.
  - THERE SHALL BE NO BUILDINGS OR PERMANENT STRUCTURES PLACED ON UTILITY EASEMENTS.
  - BUILDING SET BACK LINES SHALL BE AS REQUIRED BY CURRENT PALM BEACH COUNTY ZONING REGULATIONS.
  - THIS INSTRUMENT WAS PREPARED BY ROBERT J. WHEDDEN IN THE OFFICE OF BENCH MARK LAND SURVEYING AND MAPPING, INC., 2300 PALM BEACH LAKES BLVD., WEST PALM BEACH, FL 33409, PHONE NO. 689-2111.